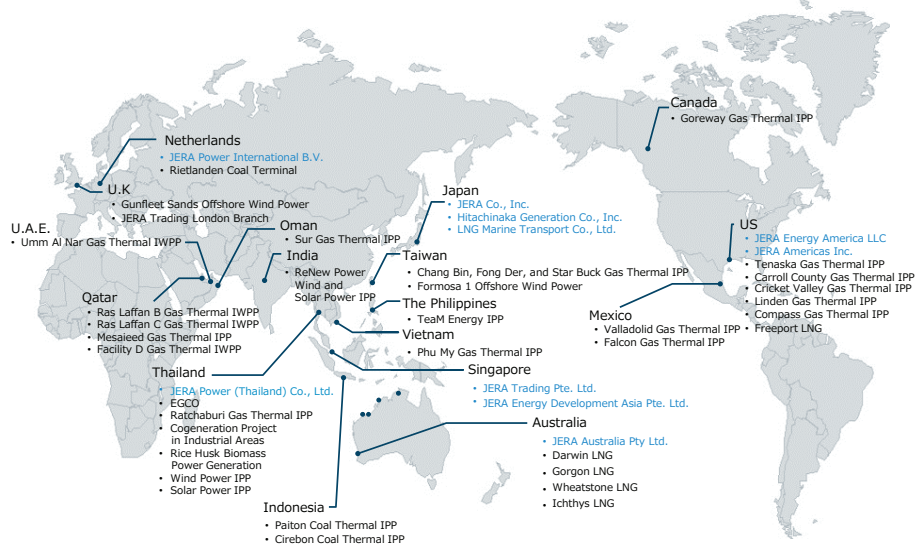


## JERA Group Hubs and Project Participation (as of December 2018)



# Jera

Energy for a New Era



## Contact JERA

### JERA Co., Inc.

Nihonbashi Takashimaya Mitsui Building 25th Floor  
2-5-1 Nihonbashi, Chuo-ku,  
Tokyo 103-0027 Japan  
[www.jera.co.jp](http://www.jera.co.jp)

## Contact Us

### JERA Power (Thailand) Co., Ltd.

The 9th Towers Grand Rama 9 Tower B 16th floor  
33/4 Rama 9 Road, Huay Kwang, Huay Kwang  
Bangkok 10310 Thailand  
Tel: +66-2-168-1290 Fax: +66-2-168-1291  
[www.jerapt.co.th](http://www.jerapt.co.th)

## Message from the Managing Director

JERA Power (Thailand) Co., Ltd. ("JERA-PT", originally established as Chubu Electric Power (Thailand) Co., Ltd. in 2003) is a Thailand-based subsidiary of JERA Co., Inc. ("JERA") which was established based on the comprehensive alliance entered into between Tokyo Electric Power Co., Inc. ("TEPCO") and Chubu Electric Power Co., Inc. ("CEPCO") encompassing the entire energy supply chain from upstream fuel investment and fuel procurement through power generation.

In Thailand, JERA has invested in the gas-fired thermal IPP, SPP cogeneration, renewable power (i.e. Biomass, Wind and Solar) businesses.

We, JERA-PT, as a hub of JERA in Thailand as well as the other countries in the Indochina peninsula region, are seeking the opportunities of new investments in various types of power generation and LNG businesses, managing the assets invested by JERA in Thailand, and providing power plants with Operation and Maintenance services and catering the technical consultant (Engineering) services to customers.

JERA-PT as part of JERA which has always worked as owner side, is aiming at high quality of services with user's mind to meet customer's needs.



Tomonori Ishiguro  
Managing Director



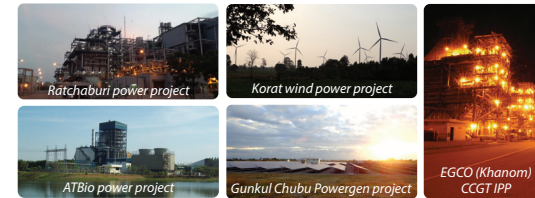
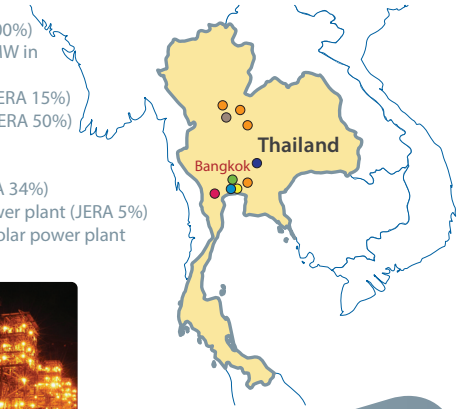
## JERA Business Field

JERA would pursue the investment income and expanding businesses in areas and broadening business domain by globally integrating the supply-chain from the upstream fuel investment, fuel procurement to the power generation. JERA would also pursue the most efficient operation in fuel procurement, fuel trading and operation of the power plants by expanding businesses in areas and broadening business domain, utilizing know-how of TEPCO and CEPCO, and optimizing the value-chain.

JERA in 2025				
		As of March 2018	Assets to be Integrated in JERA	FY2025
Power Generation Business	Domestic Power Generation Capacity	650 MW	66,000 MW	New Development Approx. 9,000 MW
	Overseas Power Generation Capacity (Development Output)	8,000 MW	-	Approx. 15,000 MW
	Renewables Development Capacity	400 MW	-	Approx. 3,000 MW
Fuel Business	LNG Physical Transaction Volume	35 MTPA	-	Approx. 35 MTPA
	Number of Upstream Investment Projects	5 projects	-	Approx. 10 projects
	Number of LNG Vessels	16 vessels	-	Approx. 25 vessels

## JERA Businesses in Thailand

- **JERA Power (Thailand) Co., Ltd.**: O&M & Engineering services/ Development & asset management (JERA 100%)
- EGCO IPP: Total equity contracted capacity of 4,250 MW in 5 countries in Asia Pacific region (JERA 11.97%)
- Ratchaburi power project - 1,400 MW gas CCGT IPP (JERA 15%)
- CRESCO: O&M service for Ratchaburi power project (JERA 50%)
- Lat Krabang (PPTC) 120 MW SPP Cogen. (JERA 23.8%)
- Bang Poo (SSUT) 240 MW SPP Cogen. (JERA 19%)
- ATBio power project - 20 MW rice husk-fired SPP (JERA 34%)
- Korat wind power project - 180 MW (2 sites) wind power plant (JERA 5%)
- Gunkul Chubu Powergen project - 30.9 MW (5 sites) solar power plant (JERA 49%)



## JERA Power Thailand Businesses

### O&M Services

- Ratchaburi power - 1,400 MW gas CCGT IPP (COD: 2008) conducted by CRESCO
- ATBio power - 20 MW rice husk fired SPP (COD: 2005)

### Engineering Services

- PPTC 120 MW SPP Cogen. (COD: 2016)
  - SSUT 240 MW SPP Cogen. (COD: 2016)
  - TJ Cogen. 115 MW SPP\* (COD: 2017)
  - TP & SK Cogen. 250 MW SPP\* (COD: 2017)
  - Bansawan 6 MW Biomass VSPP\* (COD: 2018)
  - OSCAR 1&2 17.6 MW Biomass VSPP\* (COD: 2018)
  - Other feasibility studies & technical services
- \* Conducted by JERA-PET

### Development and Asset Management

- Supporting JERA's expansion of investment into power and LNG sectors in Thailand and its regional neighbours
- Supporting business operations of JERA's existing projects in Thailand

## Company Outline

Name	JERA Power (Thailand) Co., Ltd.
Establishment	March 2003
Shareholder	JERA 100%
Subsidiaries (% of shares)	<ul style="list-style-type: none"> <li>• Chubu Ratchaburi Electric Services Co., Ltd. - CRESCO (50%)</li> <li>• JERA Power Engineering (Thailand) Co., Ltd. - JERA-PET (49%)</li> </ul>
Main Objectives	<ul style="list-style-type: none"> <li>• its neighbouring countries for JERA</li> <li>• Delivering engineering services of power plant</li> </ul>